



## 1.5

Hydronic is the ideal hydraulic lift for existing buildings, capable of adapting to any shaft type.

### ► Applications

**Residential  
Refurbishments  
Existing shafts  
Modernizations  
Minimum shaft dimensions**

## Advantages

### Versatility:

We adapt each lift to each different shaft optimizing spaces.

### Reduced pit and headroom:

In existing buildings, we adapt our lifts in compliance with the Regulations for pit and headroom. (EN 81.21).

### Confort:

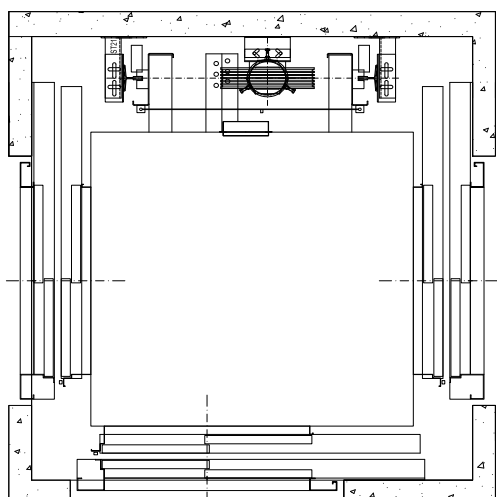
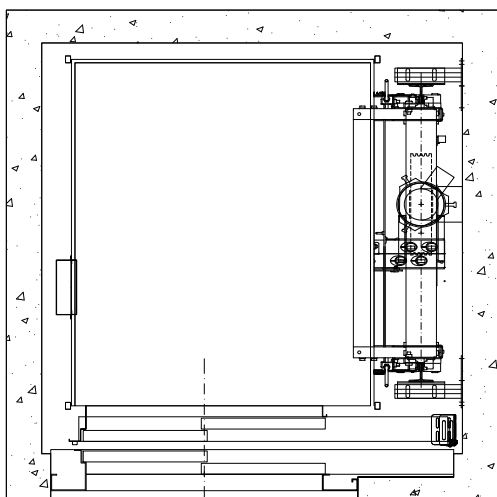
Excellent level of confort, equivalent to a traction lift using electronic valves

### Adaptability:

Easy control and maintenance.

### Safety:

Automatic emergency system always active during the descent, even in the event of power failure.



## Technical characteristics

<b>Rated load (Kg)</b>	180 - 1.800
<b>Rated speed (m/s)</b>	0.3 - 0.63 (1m/s optional)
<b>Machine room</b>	MR / Power unit cabinet/ MRL Tank in pit
<b>Entrances</b>	0-90° - 180° - 270°
<b>Roping</b>	1:1 2:1
<b>Traction ropes diameter (mm)</b>	8,0 - 9,0 - 10,0 - 12
<b>Guiding system</b>	Pivoting or rollers on the safety gear side to guarantee operation

Minimum Pit & Headroom (mm)		
Q (Kg)	Min Pit.	Min. Headroom
320	255	2.720
630	265	2.660
1.000	350	2.860
1.250	740	2.860
1.600	740	2.860

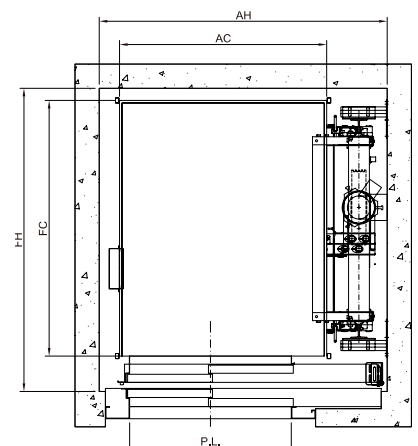
**Travel** Up to 25

**Door type** Automatic - Semiautomatic

**Restrictive technical measure** GMV - MORIS - BUCHER

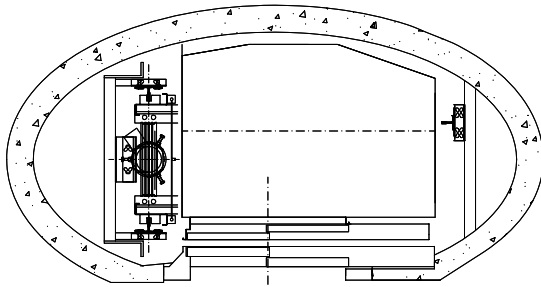
**Panoramic/scenic car options** Yes

**Weatherproof** Yes

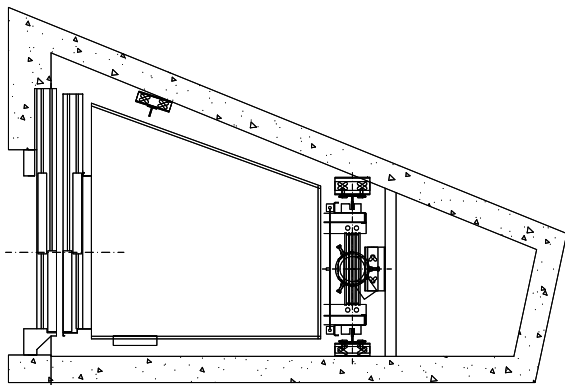




Panoramic



Irregular shaft



Borehole piston

